

# Drug Information Sheet("Kusuri-no-Shiori")\_Draft

Internal

Revised: 02/2012

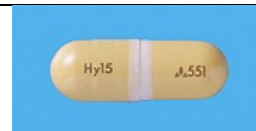
The information on this sheet is based on approvals granted by the Japanese regulatory authority. Approval details may vary by country. Medicines have adverse reactions (risks) as well as efficacies (benefits). It is important to minimize adverse reactions and maximize efficacy. To obtain a better therapeutic response, patients should understand their medication and cooperate with the treatment.

## Brand name:Hypoca 15mg Capsules

**Active ingredient:**Barnidipine hydrochloride

**Dosage form:**brownish yellow, opaque capsule sealed with a white belt, No.3 (major axis 15.8mm)

**Print on wrapping:**(Face) Hypoca 15mg, house-mark + 551, 15mg, (Back) ヒポカ, 15mg



## Effects of this medicine

This medicine exerts a calcium channel blocking effect, thus lowering blood pressure.

It is usually used for the treatment of hypertension, renal parenchymatous hypertension and renovascular hypertension.

## Before using this medicine, be sure to tell your doctor and pharmacist

- If you ever experienced any allergic reaction (itch, rash etc.) to any medicine.
- If you are pregnant or breastfeeding.
- If you are taking any other medicinal products. (Some medicines may interact to enhance or diminish medicinal effects. Beware of over-the-counter medicines and dietary supplements as well as other prescription medicines.)

## Dosing schedule (How to take this medicine)

- Your dosing schedule prescribed by your doctor is<< to be written by a healthcare professional>>
- General dosage regimen: For adults, take 10 to 15mg of the active ingredient at a time, once daily, after breakfast. However, start your dose at 5 to 10mg of the active ingredient at a time, once daily. The dose may be gradually increased, if necessary.
- As this preparation contains 15mg of the active ingredient per capsule, take this preparation when you take at least 15mg at a time according to the above dosage regimen. Strictly follow the instructions of your doctor/pharmacist.
- If you realize that you have missed a dose in the morning, take the missed dose as soon as possible.If you realize it in the afternoon, skip the missed dose and continue your regular dosing schedule from the following morning onwards. DO NOT take double doses to make up for the missed dose.
- If you took too much of the medicine (more than ordered), check with your doctor/pharmacist.
- Do not stop taking the medicine without the instructions of your doctor.

## Precautions while taking this medicine

- The medicine may cause dizziness, etc. due to decreased blood pressure. Pay close attention when you work at heights, drive a car or operate dangerous machinery.
- Since intake of grapefruit juice may enhance the effect of the medicine, refrain from drinking it.

## Possible adverse reactions to this medicine

Common side effects are reported as below. If any of them occurs, check with your doctor/pharmacist: queasy, palpitations, flushed face, hot flushes, oedema, headache, heaviness sensation of the head, dizziness, swaying feeling, redness, rash, itching, photosensitivity, etc.

**The symptoms described below are rarely seen as initial symptoms of the adverse reactions indicated in brackets. If any of these symptoms occur, stop taking this medicine and see your doctor immediately.**

- difficulty with breathing, urticaria, swelling around the eyes or mouth [anaphylactic signs]
- dizziness on standing up, dizziness, feeling of weakness [excessive decrease in blood pressure]
- general malaise, loss of appetite, yellowing of the skin and the whites of the eyes [hepatic dysfunction, jaundice]

**The above symptoms do not describe all the adverse reactions to this medicine. Consult with your doctor or pharmacist if you notice any symptoms of concern other than those listed above.**

## Storage conditions and other information

- Keep out of the reach of infants and children. Store away from direct sunlight, heat and humidity.
- Discard the remainder. Do not store them. Consult with your dispensing pharmacy when you discard the medicine.

**For healthcare professional use only** / /

For further information, talk to your doctor or pharmacist.